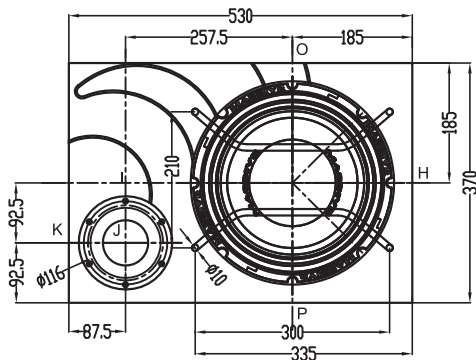
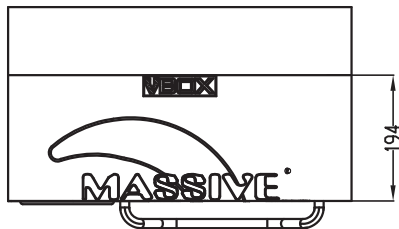
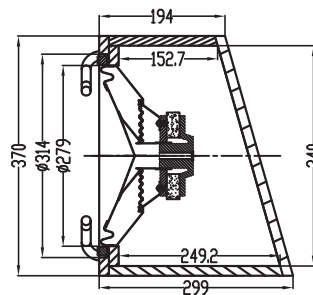
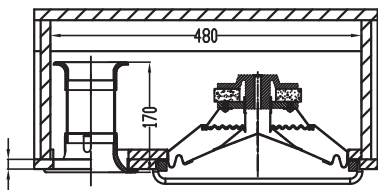


Quick Guide Specifications

- * High Flux FEA Motor
- * Carpeted with Custom Embroidery
- * Heavy guage Steel Speaker Protection Rods
- * Custom Tuned Dual Flare Port
- * 5 way binding post Push Type Terminal



VB 12

Configuration	12" Ported High Pass
Enclosure Material	MDF / Carpet
Power Handling, RMS	300 Watts
Power Handling, Peak	600 Watts
Frequency Response	35Hz- 120Hz
Impedance	4 Ohms
Sensitivity (2.83V @1m)	92 dB
Dimension Metric	299 x 340 x 530 (mm)
Dimension Standard	11.77" x 13.39" x 20.87"



Massive Audio, Inc. Limited Warranty (USA)

1. This 1 Year warranty will only be valid if the warranty registration card is properly completed and returned to Massive Audio, Inc. with installation receipt within 30 days from original date of purchase.
2. Massive Audio, Inc. warrants all its products to be free from defects for a period of one year from the date of purchase, with exception from those caused by physical damage and/or misuse, when installed by an authorized Massive Audio dealer. (90 day limited warranty for over the counter sales, self installs or non registered products)
3. Physical damages that are visual in nature, i.e. dust caps with indentations, rips in surrounds and/or cones, damaged terminals, burnt voice coils, burn traces on PCB and any other damages that may have resulted from poor installation practices or mishandling will not be covered under any warranty.
The dealer has the right to refuse warranty replacement from a customer that misuses or abuses the product by subjecting it to continued use that is outside of the recommend specifications set forth by Massive Audio, Inc. In such cases Massive Audio, Inc. or the dealer has the option of refusing the replacement of the product.
Massive Audio, Inc. in most cases considers burnt voice coils and burnt PCB to be caused by misuse and/or intentional abuse and will not warranty returns under such conditions.
Re-cone kits must be purchased to replace speakers with burnt voice coils caused by incorrect installation, box design or improper power.
Circuit boards must be purchased to repair amplifiers that have been intentionally over gained, under powered or mis-installed.
4. This warranty will be honored to the original purchaser only and all warranty returns must be accompanied by a copy of the customer's purchase and or installation receipt from an authorized Massive Audio dealer. Note: Massive Audio, Inc. under any circumstances will not accept any packages without a return authorization number printed on the outside of the shipping carton.
5. All products that are accepted for replacement must be in new condition,(i.e. paint is un-scratched, with the exception of scratches caused by mounting screws), unbent baskets and un-chipped magnets.
6. If the product was used under normal conditions, passes inspection by Massive Audio, Inc and has been handled carefully it will be considered eligible for immediate warranty replacement.
7. The over-the-counter exchange policy should be considered carefully and applied to each individual situation. Dealers exchanging product without forethought may end up with inventory that is unsellable as new merchandise.
8. Whenever possible it is highly recommended to use the original Massive Audio cartons when shipping the speakers. Speakers that are poorly packed may make it difficult to determine the actual cause of failure. Massive Audio, Inc. recommends not to use peanut packing styrofoam unless the speakers are packed in plastic bags, eliminating any chance of residual packing foam making contact with the speaker and possibly crushing the dust cap.
9. Coverage is limited to the product only. This warranty does not cover incidental or consequential damages and does not cover the cost of freight charges, removing or reinstalling the product.
10. This warranty does not cover freight damages, freight charges and insurance in sending the products to Massive Audio, Inc.
11. This warranty will become void if the serial number has been removed or altered.

V-Box Limited Warranty Excludes cosmetic alterations due to installations, water damage and normal wear and tear.
In above cases limited one year warranty may apply to the sub-woofers only.

Massive Audio, Inc. © 2009 Printed in U.S.A.

WARRANTY REGISTRATION CARD

First Name

Last Name

Address

City

State/Province

Owner's E-mail address

Zip/Postal Code

Telephone Number with Area Code

Serial Number:

Dealer name

City

State/Province

Date of purchase

Purchase price

Model number



Make of vehicle

Vehicle's Model

Vehicle's year

Signature:

Date:

MAIL TO: P.O. Box 252004 Los Angeles, CA 90025 U.S.A.